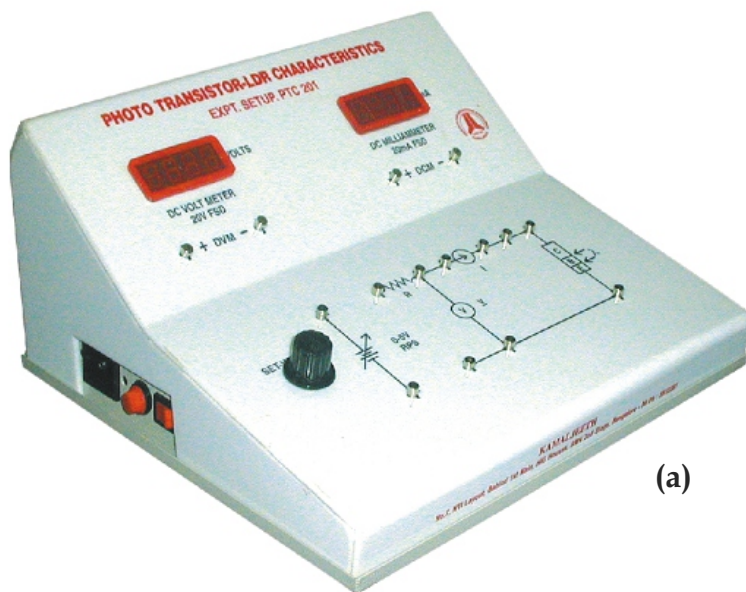


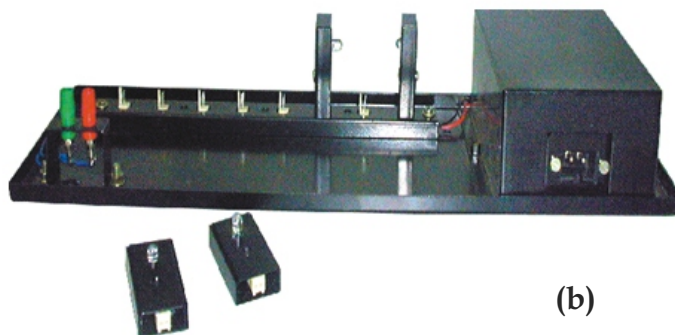
Experiment(s):

1. I-V characteristics & Spectral response of Photo transistor, LDR and Photo Cell

(For more details, procedure & manual visit: www.kamaljeeth.net)



(a)



(b)

Experiment Setup Consists:

- a) Experimental Kit
- b) Illumination Chamber

Specifications:

Experimental Setup:

Power supply: 0-5V DC variable & regulated, Short circuit protected

Volt meter: Digital DC 3½ digit

Range: 20V

Resolution: 0.01V

Current meter: Digital DC 3½ digit

Range: 2mA

Resolution: 0.001mA

Devices: Photo- transistor, LDR and Photo cell

Power: AC 220V/50Hz or
AC 110V/60Hz

Power Consumption: <50W

Cabinet: Acrylic body,
aluminum bottom

Illumination chamber:

Independent LED illumination chamber

Power: AC 220V/50Hz or
AC 110V/60Hz

Power Consumption: <20W

Connectors: 2mm-2mm Brass
moulded patch cords

Reference : Lab Experiments Journal vol-10, No.2, Page-111



KAMALJEETH INSTRUMENTS

An ISO 9001:2008 Certified Company

Address: No. 610, 5th main, 8th cross Tatanagar, Bangalore 560 092
Website: www.kamaljeeth.net, Email: labexperiments@kamaljeeth.net

3 Years manufacture's
warranty

30 Years of innovative
manufacturing